



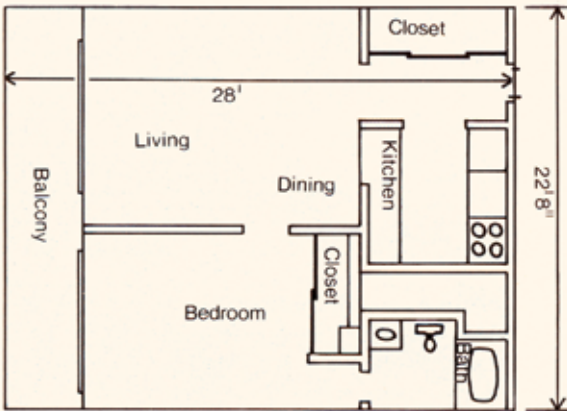
SANTA CLARA  
METHODIST  
RETIREMENT FOUNDATION





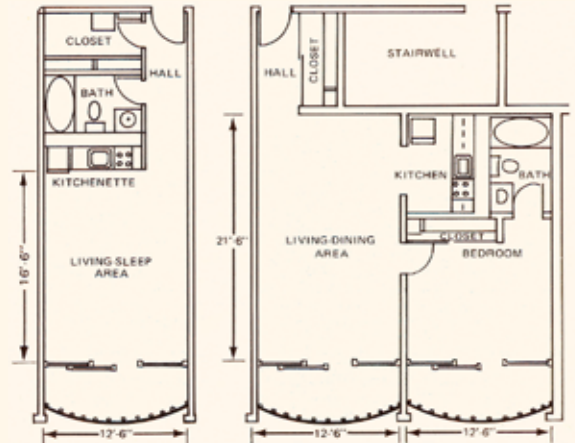
## Wesley Manor

1655 S. Winchester Blvd.  
 Campbell, California 95008  
 Tel (408) 374-9511  
 Fax (408) 374-9528  
 TTY (408) 871-7841



## Liberty Tower

890 Main Street  
 Santa Clara, California 95050  
 Tel (408) 243-6226  
 Fax (408) 243-8430  
 TTY (408) 249-5573



# Friendship



# Ambiance



# Security



# Affordability



## Our Communities

Liberty Tower is a 101-unit high-rise building located in the heart of historic downtown Santa Clara. Nestled in a lovely residential neighborhood and home to an attractive rose garden, Liberty Tower offers studio and one-bedroom apartments. Its convenient location includes nearby transportation, a post office, restaurants, a renowned bakery, and a branch library in the center of a beautiful tree-lined park.

Wesley Manor is a 156-unit high-rise building located in the beautiful City of Campbell with one-bedroom and modified one-bedroom units for persons with disabilities. Minutes from shopping, restaurants, senior center activities, libraries, and transportation services, Wesley Manor residents have a host of convenient services nearby. There is a drug store across the street and historic downtown Campbell is just minutes away.

## Amenities

Each apartment is complete with:

- A Complete Kitchen with Refrigerator, Electric Range, Oven and Disposal
- Full Bathroom
- Balcony
- Wall-to-Wall Carpeting
- Draperies
- Emergency Call System
- Fire Sprinklers and Life Safety System

Each Community also includes:

- Lounge
- Dining Room
- Game Room / Library
- Laundry Facilities
- Complimentary Van Transportation Service
- Secure Entrances with Surveillance Cameras
- Beautifully Landscaped Gardens

## Activities

A wealth of activities is available for residents to enjoy at Liberty Tower and Wesley Manor. Opportunities abound for people to interact and share experiences at our communities. Special events may include festive celebrations, health and wellness presentations, and resident-sponsored get-togethers.

Exercise classes are held at both Liberty Tower and Wesley Manor for those interested in staying active with their neighbors. With game rooms, libraries, and lounges in our common areas, residents can enjoy playing games, doing puzzles, watching movies, or participating in book chats. Musical expression is also possible with the beautiful pianos located in each building. Liberty Tower and Wesley Manor offer diverse and vibrant environments that pave the way for carefree living.

## Eligibility

Eligibility criteria must be met prior to residency. These requirements include:

- Head of household must be 62 years of age or older
- Disabled applicants at Wesley Manor must be 18 years of age or older
- Applicants must pass all credit and criminal background checks
- Annual income must not exceed income limits established for the market area
- Applicants must declare United States citizenship or submit evidence of eligible immigration status

Rent is based on 30% of a household's adjusted gross monthly income. Subscription to a 5-day-per-week dinner program is required at an additional charge.

# Carefree Living

For more information please visit our website at:  
[www.scmrf.org](http://www.scmrf.org)



**SANTA CLARA  
METHODIST  
RETIREMENT FOUNDATION**  
[www.scmrf.org](http://www.scmrf.org)

Foundation policy prohibits unlawful discrimination based on race, color, creed, gender, religion, marital status, registered domestic partner status, age, national origin or ancestry, physical or mental disability, medical condition including genetic characteristics, sexual orientation, or any other consideration made unlawful by federal, state, or local laws. It also prohibits unlawful discrimination based on the perception that anyone has any of those characteristics, or is associated with a person who has or is perceived as having any of those characteristics. All such discrimination is unlawful. The Foundation makes reasonable accommodation for applicants and qualified employees with disabilities.



FOR A BUILDING  
WITHOUT BARRIERS

